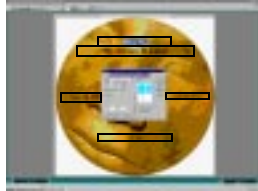


spines.. Each working area on the layout is considered a label block on the sheet. You can access the un-accessible labels on your layout with the Next and Previous Block commands from the "Design Menu". Once you have moved to the next block, you can add whatever label design and print them in the same place as your CD labels.



Printing Requester Box

Printing: Step 8: Sure Thing - CD Stomper Software makes printing on CD label sheets a breeze. It knows where each label is located on the sheet, and sequences the labels as they print from sheet to sheet.

Once you have your design ready to print, you may choose the Print command from the "File Menu".

The Print Dialog box allows you to specify the number of labels you wish to print and which label on which to begin printing. Click on the first label on the sample to choose the first label. You can also click on the "Pages" radio button if you want to print a number of entire sheets of the same label. The blue labels in the sample depict the labels which will actually print on the first page of the print job.

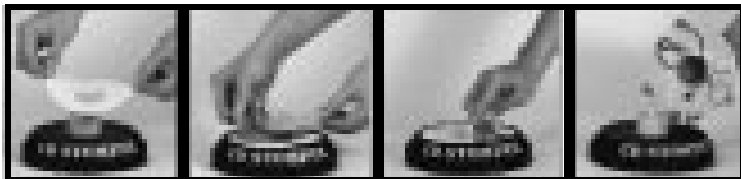
Helpful Hints:

1. Try printing on a plain piece of paper to check quality and alignment.
2. Set printer to lowest resolution for a quick test print.
3. Allow ink to dry after printing.
4. When handling discs, do not touch the surface of the disc.
5. Don't expose the disc to dust, smoke, sunlight, heat, cold or humidity
6. Never remove label once it has been applied.
7. Read the full 103-page manual which is discussed on Page 1 of this user guide.

CD LABEL APPLICATION AND USING THE APPLICATOR DEVICE

Once the CD Stomper applicator is removed from the packaging, place it on a flat surface and **twist the small knob sticking out of the top to unlock it and allow the spring action mechanism to work.**

1. To apply your printed label, you must first remove the label from the label stock after it has been printed.
2. Place the label with the graphics side down, adhesive side up, over the plunger portion of the CD Stomper Applicator.
3. Take the CD you wish to label and place it on the small knob that is on top of the plunger. Remember to place it data side up.
4. Using three fingers, grab the knob so that the tips of your fingers come in contact with the CD. Now, push down on the spring loaded plunger so the CD comes into contact with the label. You may now lift back up on the plunger and your CD has just been "**Stomped**".
5. It is a good idea to rub the label down onto the CD to remove unwanted air bubbles and to permanently affix the label to the CD. The bottom rubber side of the Stomper is a good place to place the CD to perform this final step.



Contacting Stomp Inc.,
Stomp Inc., 2950 Airway Ave., Suite B1, Costa Mesa, CA. 92626. Phone: (949) 250-6771, Fax: (949) 250-6775.

CD Stomper Quick Start Guide

For Windows

INTRODUCTION:

Welcome to Sure Thing - CD Stomper Software, the easiest way to create, and print labels for all your CD needs. Combine the Sure Thing - CD Stomper Software with your CD Stomper CD Labels and Jewel Case Inserts, and you've got a total CD labeling solution.

MANUALS AND DOCUMENTATION (Please Read):

This Quick Start Guide is included to aid you in the basics of our software program. We strongly encourage you to access, print and read the 103-page comprehensive manual which is included on your CD.

Once the software is installed, Win95/98/NT4.0 users can access this manual in two ways, you may find the manual by accessing the CD itself from the "MY COMPUTER" Icon, and the manual will be in the root directory. The second way is selecting the "Start" Button on the desktop. Go to "Programs"; then selecting the "CD Stomper-Microvision" group and the manual will be there.

Once the software is installed, Win3.x/NT3.5x the manual can be found by going to your "Program Manager" and it will be inside the CDStomper-Microvision Program Group.

Attention all users - The manual provided is in an Adobe Acrobat .PDF format. If you have Acrobat already installed, the manual will come up immediately. If you do not have Acrobat installed, we have provided this program for you to install. Please see section on Adobe Acrobat.

ACCESSING THE OVER 1200 PRE-DESIGNED BACKGROUNDS AND CLIPART

The software has come with 750 pieces of pre-designed backgrounds for your CD Labels and Jewel Case Inserts which we hope you will love. The program has an additional 500 pieces of clip art. We have created an Adobe Acrobat .PDF of all the backgrounds so you can browse and print them all at a glance. This will be helpful for you to choose and know the file name of the Image you like when you are ready to insert it into your design. **The file for the CD Backgrounds Catalog is called CD_ART.PDF.**

Win95/98/NT4.0 users can access this file in two ways. The first is by accessing the CD itself from the "MY COMPUTER" Icon, and the CD_ART.PDF. file will be in the folder called Stomp35. The second way is by selecting the "Start" button on the desktop. Go to "Programs"; then selecting the "CD Stomper-Microvision" you will find the file in the CD_ART Group.

Win3.x/NT3.5x users will find the file CD_ART.PDF by going to the "Program Manager"; the file will be found inside the CDStomper-Microvision Program Group.

USING ADOBE ADOBE TO VIEW THE ARTWORK AND MANUAL

The manual and the CD-ART .PDF catalog are both viewable and printable in Adobe Acrobat. If Adobe Acrobat is already installed on your system, please ignore this section. If it is not already installed, follow the following instructions to install it so you can access the Manual and the CD_Art Catalog.

Win95/98/NT4.0 Users - You can install Adobe Acrobat reader by finding the installer on the CD Stomper CD. You will first find the CD Stomper CD itself by selecting the "MY COMPUTER" icon. Once you choose the CD Stomper35 CD, you will then find a folder called (ADOBE). In this folder you will select the folder named Reader95. Once this folder is open a file named Ar32e301.exe will come up. Double click on this file to install Adobe Acrobat onto your System.

Win3.x/NT3.5x Users - You can install Adobe Acrobat reader by finding the installer on the CD Stomper CD. You will first find the CD Stomper CD itself by selecting from the "Program Manager" the "RUN" option from the "File Menu". To choose your CD Stomper CD you must click on the "Browse" button and select the CD-Rom drive where your CD Stomper CD is located. Once you have located your CD Stomper CD, you will then find a folder called (ADOBE). In this folder you will select the folder named Reader31. Once this folder is open, a file named Ar16e301.exe will come up. Double click on this file to install Adobe Acrobat onto your System.

STEP-BY-STEP INSTALLATION AND INSTRUCTION

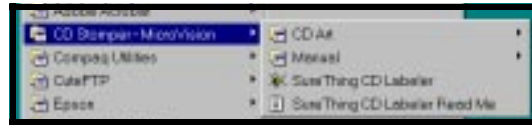


Opening Setup Screen

Installing: Step 1: Windows 95/98/NT4.x customers, please place the CD Stomper Pro CD Version 3.5 into your CD ROM Drive. Go to the "MY COMPUTER" icon located on your desktop and double click on it. Once you are in the "MY COMPUTER" icon, double click on the drive letter that represents your CD Stomper CD. The setup/Install procedure should automatically run. Please read and follow the setup prompts. For Windows 3.x/NT3.5x customers please go to your "PROGRAM MANAGER". Select the "Run" option and type in the command line: d:\install (where d:\ is your CD

ROM letter); then click on "OK". Please read and follow the setup prompts.

Running The Program: Step 2: The CD Stomper install will create a program group within your "START" menu bar called "CDStomper - Microvision". This group contains an icon called "Sure Thing CD Labeler". Please select this icon to run the application.



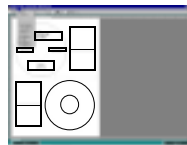
Selecting the Right Label Stock Step 3: The Sure Thing - CD Stomper Software supports multiple layouts for both CD labels and your jewel case inserts in both US letter and A4 paper sizes. In order to choose the correct label stock, you must click on the "FILE" menu item; then select "NEW". It will bring up a dialog Box. Once this box is up, please select the correct template you desire. US Customers need to select "Pro CD Labels 2-up" or "Jewel Case Inserts (US)". International customer using A4 paper need to select "Pro CD Labels 2-up (A4)" or "Jewel Case Inserts (A4)".



Selecting Template

The Layout Options Step 4: If you would like to view the entire template, you can do so by going to the menu

bar at the top of the screen and clicking on the "VIEW" menu and then selecting the "FULL PAGE" option. You will now have both circular labels and other working areas on your screen. You can go back to the single design view by repeating the process.



View Drop Down Menu

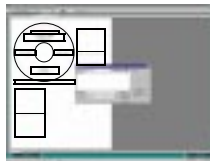
Placing Graphical Images Step 5: Sure Thing - CD Stomper Software supports a number of different image formats which can be placed on a design. These formats are JPEG, TIFF, EPS, BMP, PCX and WMF. Also, don't forget the over 1200 pre-designed images which are already on your software.

To insert a graphical image for your CD Label or Jewel Case Insert, follow these steps: 1. Under the "File" menu you will find a row of icons. One of the icons looks like a mountain. This is



Picture Tool

labeled the "PICTURE TOOL", and this can be seen to the left. Click on this icon, and it will turn your cursor into this mountain icon. 2. Now, move the cursor back down to the area on the template you want the image placed and click; then drag to create a box inside the CD outline on the template where the image will go. 3. Release the mouse button. 4. A dialog box named "New Picture" will come up. In the "Look in" field of the "New Picture" dialog box you will need to go find the path to the graphic that you want to insert. 5. Once you've shown the software the path to the images, double click on that image file name and your graphic will be inserted.



Inserting CD_Art Image

Example of Inserting one of the pre-designed backgrounds included on your CD.

Once you have selected the picture tool and drawn a box on your template the "New Picture" dialogue box will come up. From the "Look In" field please locate the CD ROM drive which represents the CD Stomper CD. Inside the CD you will go to a folder named Stomp35. Now you will select the folder titled CD_ART.

Within this folder are eight more folders which contain all the pre-designed background images, (remember, you can view all the pre-designed images with Adobe Acrobat). For purposes of this example, select the "Picture Folder" and then select pict15.jpg. This will automatically bring Pict15.jpg into the box you created earlier.

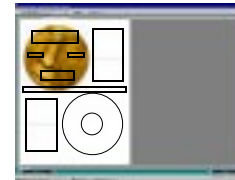
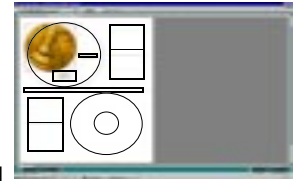
Re-Sizing your Image Step 6: Now that you have the graphic on the template, you must re-size (or make it bigger) it to cover the entire CD Label.

Using the pointer tool (shown to the left), move this image to the far upper left corner of the CD template.



Pointer Tool

Do this by clicking and holding the pointer tool down anywhere on the selected image; then push the mouse up and to the left. After moving the image to the top left corner you will want to resize the image by moving the pointer tool to the lower right corner of the square. Then you will click, hold and grab the bottom right corner of the red square and drag it to the lower right part of the template. Then just let go and the CD graphic image will then resize to perfectly cover the entire CD. You can follow these steps to resize any image.



Editing/Entering Text

Creating Text Step 7: Before creating text you must know how to move objects to different layers within your template. The Stomper software works in layers. What that means is you can have a graphic layer and a text layer overlapping on top of one another. If the graphic layer is in front of the text layer, you will not see your text. To move objects to front or back layers, you will first select an object by clicking on it with the pointer tool; then select the "EDIT MENU" on your tool bar. Here you will find the options for moving objects to the front or to the back of the layers.

There are two distinctly different tools for adding text. Both tools work differently.

The first text tool is the Text Frame tool: This tool is pictured to the left and can be found on the tool bar. Once you select this tool, you will follow the procedures we have described before to draw a box (in this case a Text Box) in the area of the template you want to place your text. Once you have drawn the box and released your mouse, the I-Beam tool pictured to the left will start blinking. You can now start to enter your text. By using the Text Frame tool to create text you will use the tools on the toolbar to change font, color, size and alignment of your text.



Text Frame



I-Beam

The second text tool is the Text Effect tool: The Text Effect tool is used to create special text.

Use this tool to create **Circular Text, Twisted Text, 3-Dimensional Text, Color Gradiated Text and much, much more.** The Text Effect tool icon is pictured to the right and can be found on your tool bar. Again, once you have selected this tool you will need to draw a box where you want the text to be placed. Once you have drawn the box and released the mouse, the words "Your Text Here" will appear in the box you just created. You now need to double click on this box to add, modify and add effect to your text. A Text Effect dialog box will now come up. This dialog box is pictured to the left. You will work in this Text Effect dialog



Text Effect



Text Effect Window

box to create your effects, styles, fills, borders and much, much more. Please spend time learning how to use this tool. It is a powerful function of this software that will make your CD's look fantastic!!!

ACCESSING THE ALTERNATE AREAS OF YOUR WORKSPACE

Many of the CD Stomper label sheets have additional labels for diskettes, zip disks and jewel case